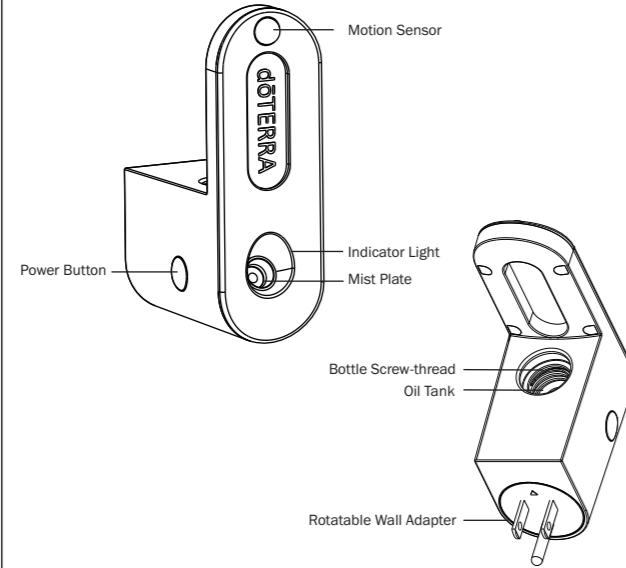


dōTERRA® Myst
Wall Plug Diffuser
Instruction Manual
v1

Overview



IMPORTANT SAFETY INSTRUCTIONS

WARNING:
When using electric products, basic precautions should always be followed, including the following:

- Read all the instructions before using the product.
- To reduce the risk of injury, close supervision is necessary when a product is used near children.
- Do not put fingers or hands into the product.

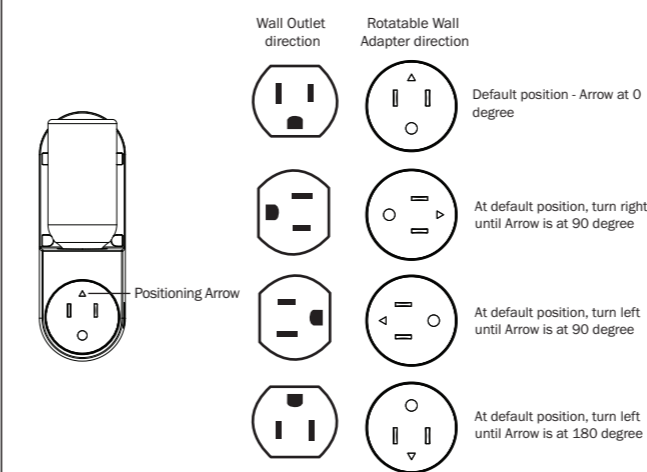
To reduce the risk of fire, electric shock, or injury to persons when using the appliance, follow basic precautions, including the following.

- This appliance is not intended for use by persons (including children) with reduced physical, sensory or mental capabilities, or lack of experience and knowledge, unless they have been given supervision or instruction concerning use of the appliance by a person responsible for their safety. Children should be supervised to ensure that they do not play with the appliance.

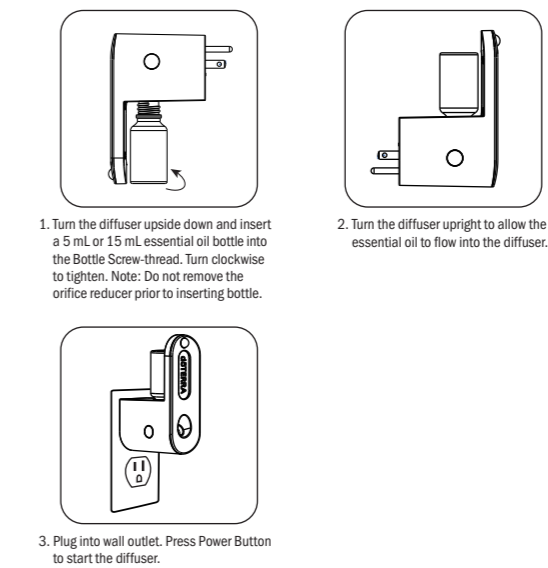
- This appliance can be used by children ages 8 years and above and persons with reduced physical, sensory or mental capabilities if they have been given supervision or instruction concerning use of the appliance in a safe way and understand the hazards involved. Children should not play with the appliance. Cleaning and user maintenance should not be made by children without supervision.
- Children should be supervised to ensure that they do not play with the appliance.
- Only use the diffuser for the intended purpose.
- When storing the diffuser or relocating it, turn the power off, unplug the diffuser, empty the Oil Tank, and clean the diffuser.
- Turn off the diffuser and unplug immediately if there is any smoke or burning smell.
- Do not fill essential oil directly into the Oil Tank to avoid spillage. Always insert 5 mL or 15 mL essential oil bottle into the Bottle Screw-thread and turn clockwise to tighten securely.
- Do not use this diffuser near water.
- Ensure the diffuser is positioned upright when Plugged into wall outlet.
- Do not place the diffuser in direct sunlight or close to a refrigerator, a fan, or other hot environment.
- This diffuser is not for medical purposes. DO NOT inhale the mist directly from the diffuser.

Installation Instructions

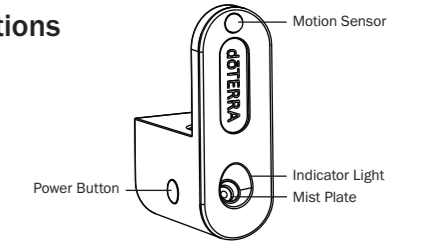
The diffuser is equipped with a Rotatable Wall Adapter to accommodate different wall outlet direction. Always rotate the Rotatable Wall Adapter to keep the diffuser at upright position when plugged into the wall outlet.



Instructions For Use



Functions



- Power Button**
- 1st press: Motion Sensing Mode
The Indicator Light will turn yellow. The diffuser will spray 7 bursts, then hibernate for 3 minutes. After 3 minutes, each time the Motion Sensor detects movement, the diffuser will spray 3 bursts, then hibernate for 3 minutes.
 - 2nd press: Time Interval Mode
The Indicator Light will turn green. 7 bursts at start up then 3 bursts every 15 minutes.
 - 3rd press: Turn off the diffuser
- ** Press and hold the Power Button to manually activate continuous burst. Release Power Button to stop continuous burst, the diffuser switches off.

Dark Mode

Double click the Power Button to turn off the Indicator light completely. The selected Mode setting is retained. The diffuser will continue to spray based on the selected Mode setting with the Indicator Light turned off and not blinking during bursts.

Double click Power Button again to turn off the Dark Mode. The Indicator light illuminates at the selected Mode setting.

Features

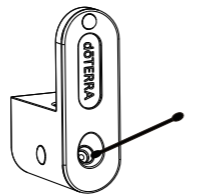
- Dimensions: 101.4 x 41 x 119 mm / 3.99 x 1.61 x 4.69 in
- Material: PP
- Suggested Room Size: 10 sq. m / 110 sq. ft
- Motion Sensor Range: 4 meter / 13 feet, 120 degree field of view
- Power Source: AC100-240V

Cautions

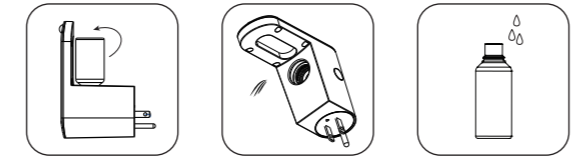
- It is normal for mist volume to vary with the type of essential oil used.
- Use of chemical fragrances, spices, or impure essential oils may cause product damage. Do not diffuse any fatty oils/carrier oil with diffuser.
- Essential oils with high viscosity (including essential oils containing Fractionated Coconut Oil) may cause the diffuser not to mist properly. If the diffuser has difficulty misting the essential oil, follow "Cleaning and Maintenance" to clean away the essential oil from the Oil Tank.
- It is recommended to leave the essential oil bottle in the diffuser until completely dispensed and the diffuser stops spraying. Changing the essential oil bottle before this will cause the oil to spill.
- When there is essential oil inside the Oil Tank, essential oil may leak when the diffuser is not positioned upright. Do not position the diffuser at an angle or upside down before essential oil is completely dispensed.

Cleaning and Maintenance

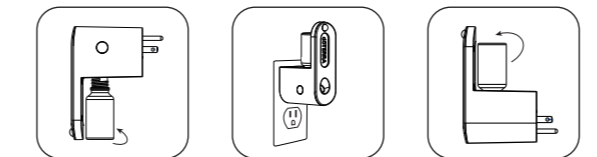
Clean the Mist Plate with a cotton swab and warm water at least twice a week.



Clean the diffuser each time a new bottle of essential oil is used. Before cleaning, turn the diffuser off and unplug the diffuser from wall outlet.



- Keep the diffuser upright. Turn counter-clockwise to remove the essential oil bottle.
- If there is essential oil left inside the Oil Tank, carefully empty the essential oil from the sides. Use clean paper towel to soak away residue oil.
- Fill an empty essential oil bottle with 2 mL / 0.07 fl. oz of 3 parts vinegar and 7 parts water.



- Turn the diffuser upside down and insert the 5 mL or 15 mL essential oil bottle with the suggested cleaning solution into the Bottle Screw-thread. Turn clockwise to tighten.
- Turn the diffuser upright. Plug into wall outlet. Press and hold the Power Button to mist continuously until the diffuser no longer sprays mist. Release the Power Button
- Keep the diffuser upright. Turn counter-clockwise to remove the empty essential oil bottle.

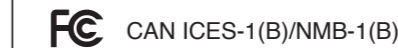
Warning:
1. Use of corrosive or harsh chemicals may cause damage. Essential oil should not come in contact with the exterior surface of the unit.
2. Clean the diffuser in open space with good air flow and away from hot environment or heat sources.

Troubleshooting

Status	Cause(s)	Solution(s)
Startup Failure/ Early Shutdown	1. Wall Plug prongs are not completely plugged into wall outlet.	1. Ensure the diffuser is properly plugged into wall outlet.
No Mist or Abnormal Mist	1. Essential oil of high viscosity / fatty oil / carrier oils used.	1. Please follow the instructions on cleaning and maintenance to clean the essential oil from the Oil Tank.
	1. Oil contamination on Mist Plate.	1. Please follow the instructions on cleaning and maintenance.
Oil Leakage	1. Motion sensor detects no motion movement.	1. Ensure motion is within 4 meter / 13 feet range and 120 degree field of view.
	1. Essential oil bottle not tightened securely. 2. Essential oil is left inside the Oil Tank and diffuser stored / positioned at angle or upside down	1. Secure the essential oil bottle tightly. 2. Follow the instructions on cleaning and maintenance to clean the essential oil from the Oil Tank.

Product Warranty

dōTERRA® One (1) Year Limited Warranty. dōTERRA's warranty obligation for this product is limited to the terms set forth below: dōTERRA International, LLC ("dōTERRA") warrants this diffuser against defects in materials and workmanship under normal use for a period of ONE (1) YEAR from the date of purchase by the original end-user purchaser ("Warranty Period") provided the operation and maintenance strictly follow the instruction manual. If a defect arises and a valid claim is received within the Warranty Period, at its option and to the extent permitted by law, dōTERRA will either (1) ship a new replacement diffuser to original end-user, or (2) issue a refund based on the dōTERRA 30-day return policy. When a replacement or refund is given, the diffuser for which the replacement or refund is provided must be returned to dōTERRA prior to replacement or refund and becomes dōTERRA's property. Please call 1-800-411-8151 for more information.



This device complies with part 18 of the FCC Rules
(a) The interference potential of device or system:
Operation is subject to the following two conditions:
(1) This device may not cause harmful interference, and
(2) this device must accept any interference received, including interference that may cause undesired operation.

- (b) Maintenance of the system:
CAUTION: Changes or modifications not expressly approved by the party responsible for compliance could void the user's authority to operate the product.
- (c) Simple measures that can be taken by the user to correct interference:
NOTE: This equipment generates, uses and can radiate radio frequency energy and, if not installed and used in accordance with the instructions, may cause harmful interference to radio communications. However, there is no guarantee that interference will not occur in a particular installation. If this equipment does cause harmful interference to radio or television reception, which can be determined by turning the equipment off and on, the user is encouraged to try to correct the interference by one or more of the following measures:
- Reorient or relocate the receiving antenna.
 - Increase the separation between the equipment and receiver.
 - Connect the equipment into an outlet on a circuit different from that to which the receiver is connected.
 - Consult the dealer or an experienced radio/TV technician for help.

model number: DT057D
Manufactured for: dōTERRA INTL, LLC
389 S 1300 W, Pleasant Grove, UT 84062 USA